

# EMP-3000

## COLOR DOPPLER DIAGNOSTIC ULTRASOUND SYSTEM

For reliability, intelligence, versatility, and flexibility, the EMP-3000 is the best choice. Designed to meet the imaging needs of clinicians and radiologists, this entry-level trolley-based digital color doppler ultrasound simplifies daily workflows with its advanced features, making operations both swift and intuitive

### CONFIGURATION

- 21.5/23.8" High Resolution Medical Grade Monitor

1



- Streamlined Keyboard and Control Panel

2



- 04 Active Probe Ports

3



- USB Ports, VGA Ports, DICOM3.0

4



- High Capacity Storage Drive (>500GB SSD)

5



### PROBE SERIES



Convex



Micro Convex



Endocavity



Linear



Phased Array



High Frequency  
Phased Array

SHENZHEN EMPEROR ELECTRONIC TECHNOLOGY CO., LTD

ADD: No.1101 Tianliao Community Yutang Street, Guangming District, 518107 Shenzhen, PEOPLE'S REPUBLIC OF CHINA  
Web: <https://www.china-emperor.com>



Please follow us "Emp Imaging"

## ADVANCED IMAGING TECHNOLOGY

- |  |   |
|--|---|
| • Elasto Elastography Imaging                            | • eView Panoramic Imaging               |
| • EAI Auto Breast Tumor Detection AI Technology          | • PF Pulse Inversion Harmonic Frequency |
| • ePure Speckle Reduction Technology                     | • TSI Tissue Specific Imaging           |
| • ePure+ Premium Speckle Reduction Technology (Optional) | • TP-View Trapezoid Imaging             |
| • eFCI Frequency Compound Imaging                        | • Needle Enhancement Technology         |
| • eSCI Spatial Compound Imaging                          | • Auto Calculations                     |
| • eSpeed One Key Optimization                            | • Full Screen Zoom                      |

### IMAGING MODE

B, 2B, 4B, M, BM, Anatomical M, Color M  
CFM, PDI, DPDI, PW, CW, Dual Live  
Duplex, Triplex Mode

### CLINICAL APPLICATIONS

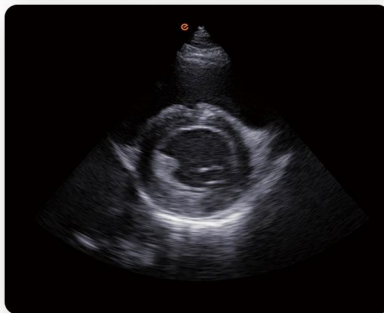
• Abdomen • Obs & Gyn • Urology  
• Cardiology • Pediatric Cardiology  
• Small Parts • MSK • Vascular and more

## CLINICAL IMAGES

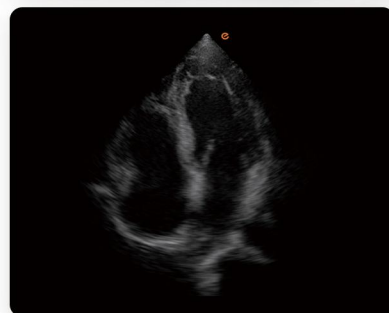
Fetal craniocerebrum



Fetal Cardiac



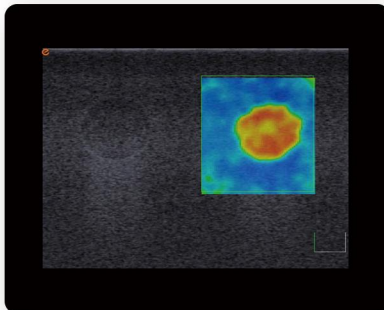
Cardiac



Kidney Blood Flow



Elastography



Liver

