

Transducers

C5-2Q



2 - 5 MHz
Curved Array

C5-1Q



1 - 5 MHz
Single Crystal
Curved Array

MC8-4Q



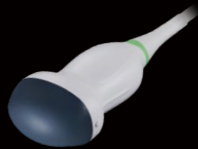
4 - 8 MHz
Micro - Convex Array

MC9-3TQ



3 - 9 MHz
Micro - convex Array

C6-2MQ



2 - 6 MHz
3D/4D Mechanical
Curved Array

L12-5HQ



5 - 12 MHz
Linear Array

L17-7HQ



7 - 17 MHz
High Frequency
Linear Array

L17-7SQ



7 - 17 MHz
High Frequency Compact
Linear Array

E10-3BQ



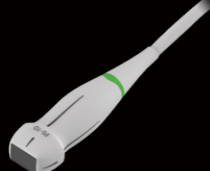
3 - 10 MHz
Endocavity
Curved Array (200°)

E10-3HQ



3 - 10 MHz
Endocavity
Curved Array (200°)

P5-1Q



1 - 5 MHz
Phased Array

P7-3Q

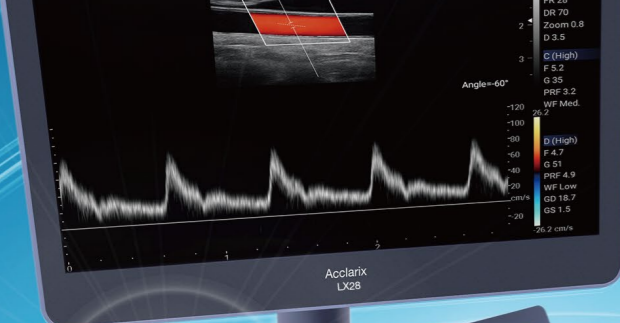


3 - 7 MHz
Pediatric Phased Array

Being Productive
Being Trust

Acclarix™ LX28
Diagnostic Ultrasound System





New Generation of Capability and Flexibility

Integrated with compact appearance, cutting-edge technology and intelligent workflow, Acclarix LX28 is to provide more valuable innovation. Its excellent image performance plays an important role in the prevention and early detection in primary medical care, enriching the diagnostic application and enhancing the clinical value.

The Virtue of Value

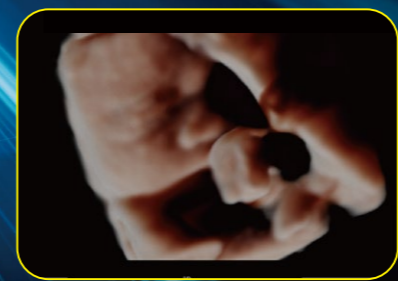
The Acclarix LX28 delivers unmatched value and performance across a broad range of applications:

- Abdomen
- Cardiac Screening
- Small Parts
- OB/GYN
- Vascular
- MSK
- Nerve
- Breast

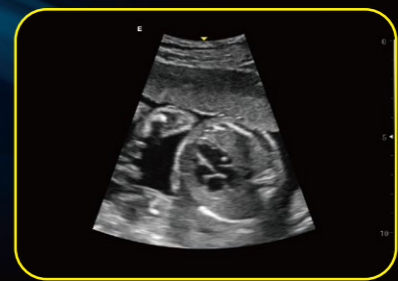
Stunning Clarity

Compacted with innovative Edan TAI technology and multiple imaging processing technologies, Acclarix LX28 could perfectly display ultrasound image in different modes, assisting sonographer to make more precise diagnosis.

- High fidelity, high-channel count architecture results in superb detail resolution, particularly at depth
- Tissue Adaptive Imaging (TAI) continuously and automatically optimizes imaging allowing more focus on the patient
 - In B-mode, TAI fine tunes multiple parameters to provide the best possible image quality
 - In Doppler, TAI automatically adjusts for flow state, providing improved continuity, border detection and filling of color



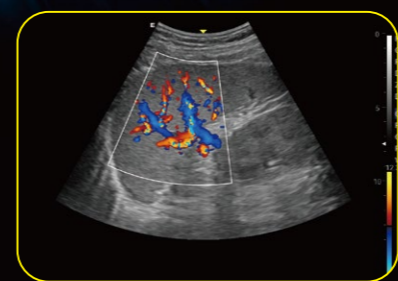
Fetal Face (eLive)



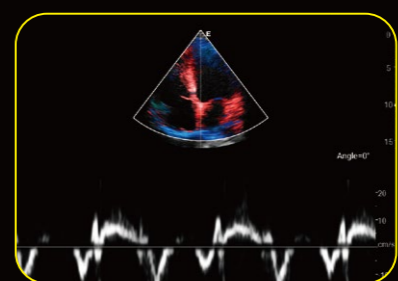
Fetal Heart



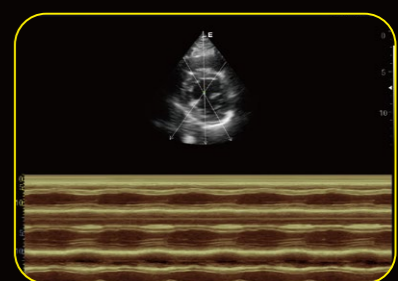
MSK



Splenic Hilum



TVD



Anatomic M

Distinctive Design



Considerate gel warmer design for better experience



Customizable touch screen user panel to simplify diagnosis



5 active transducer ports to maximize clinical application



Keyboard with dedicated swivel for easy folding